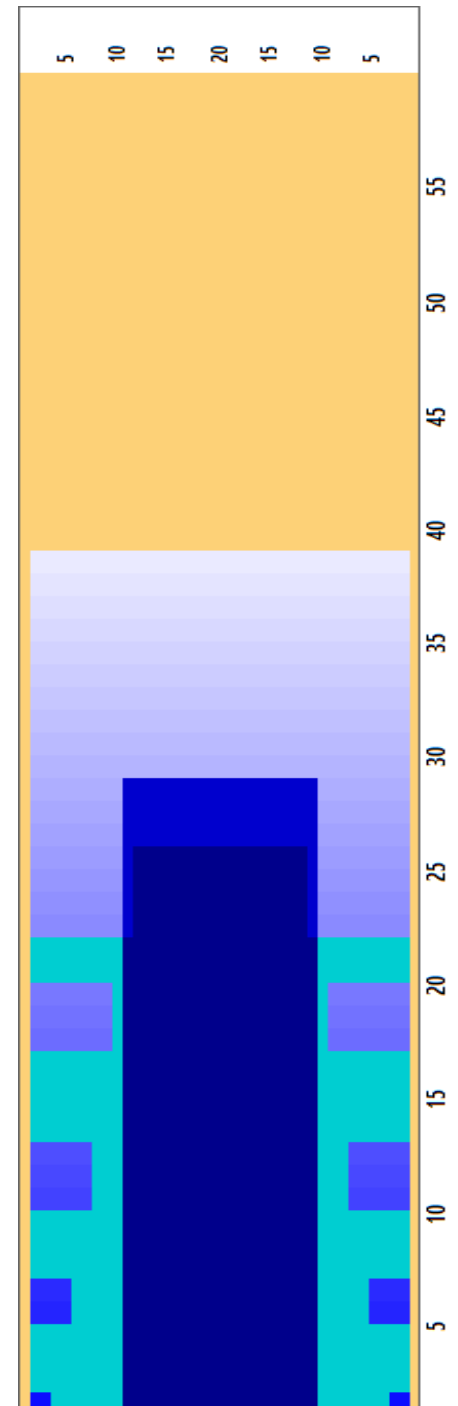


Oil Pattern Distance	39	Reverse Brush Drop	32	Oil Per Board	45 ul
Forward Oil Total	13.95 mL	Reverse Oil Total	5.13 mL	Volume Oil Total	19.08 mL
Tank Configuration	N/A	Tank A Conditioner	TERRAIN	Tank B Conditioner	ICE

	START	STOP	LOADS	SPEED	BUFFER	TANK	CROSSED	START	END	FEET	T.OIL
1	2L	2R	1	14	4	A	37	0.0	0.0	0.0	1665
2	4L	4R	1	18	3	A	33	0.0	2.5	2.5	1485
3	2L	2R	1	18	4	A	37	2.5	5.0	2.5	1665
4	6L	6R	1	18	3	A	29	5.0	7.5	2.5	1305
5	2L	2R	1	22	4	A	37	7.5	10.6	3.1	1665
6	8L	8R	1	22	3	A	25	10.6	13.7	3.1	1125
7	2L	2R	1	26	4	A	37	13.7	17.3	3.6	1665
8	10L	10R	1	22	3	A	21	17.3	20.4	3.1	945
9	2L	2R	1	18	4	A	37	20.4	22.9	2.5	1665
10	12L	12R	1	22	3	A	17	22.9	26.0	3.1	765
11	2L	2R	0	30	3	A	0	26.0	39.0	13.0	0

	START	STOP	LOADS	SPEED	BUFFER	TANK	CROSSED	START	END	FEET	T.OIL
1	2L	2R	0	30	3	B	0	39.0	29.0	-10.0	0
2	11L	11R	2	22	3	B	38	29.0	22.8	-6.2	1710
3	11L	11R	2	22	3	B	38	22.8	16.6	-6.2	1710
4	11L	11R	2	18	3	B	38	16.6	11.5	-5.1	1710
5	2L	2R	0	14	3	B	0	11.5	0.0	-11.5	0



Cleaner Ratio Main Mix 24:1 Forward  
 Cleaner Ratio Back End Mix 33:1 Reverse  
 Cleaner Ratio Back End Distance 30 Combined  
 Buffer RPM: 4 = 650 | 3 = 500 | 2 = 300 | 1 = 200



Item	3L-7L:18L-18R	8L-12L:18L-18R	13L-17L:18L-18R	18L-18R:17R-13R	18L-18R:12R-8R	18L-18R:7R-3R
Description	Outside:Middle	Middle:Middle	Inside:Middle	Middle: Inside	Middle:Middle	Middle:Outside
Track Zone Ratio	2.58	1.43	1	1	1.43	2.58

